



# Portfolio

*Residential Interior Design*

By Ei Wood

[www.eiwood.co.za](http://www.eiwood.co.za)



## ABOUT DESIGN BY EI WOOD

We know that your project is unique, whether it's an office space, workshop, showroom, or your home, it'll need its own unique design that won't only be aesthetically pleasing but will also need to function specifically catered to its purpose.

With that in mind, every design project needs to follow a well-thought-out creative process and needs a base to be implemented with ease and ultimate success.

[www.eiwood.co.za](http://www.eiwood.co.za)



# Portfolio

*Contents*

House Woods 2024 Addition	02
House Masango Décor Refresh	12
House Grant Full Renovation	19
House Woods Guest Suite	34
Contact Us	37





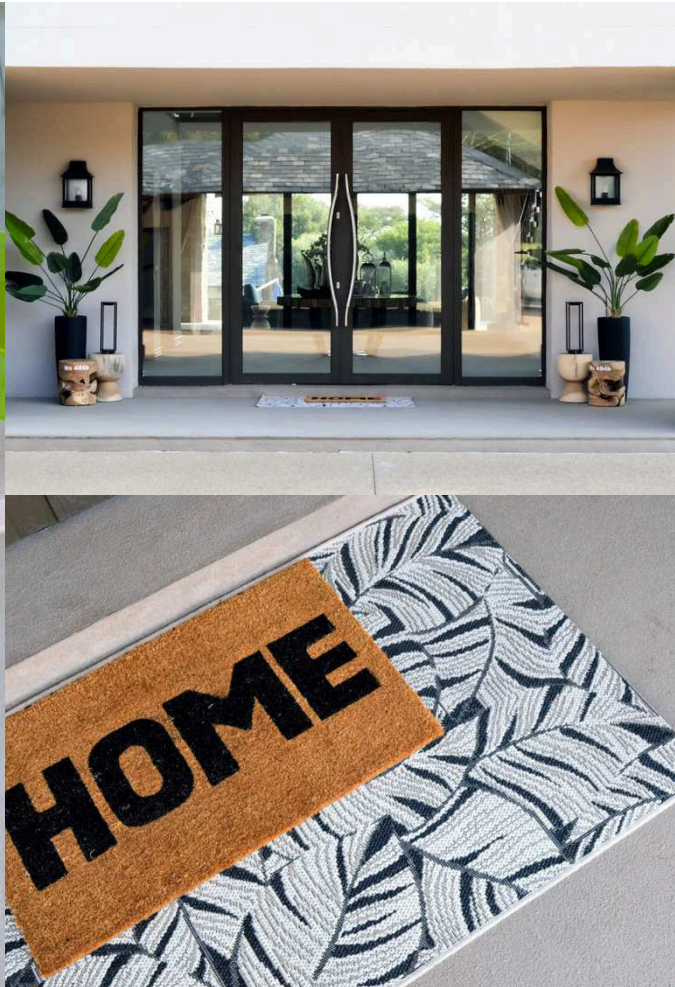
# HOUSE WOODS

2024 *Addition*

[www.eiwood.co.za](http://www.eiwood.co.za)

# MAIN ENTRANCE - FRONT DOOR

## *Exterior Porch*



The main entrance of House Woods sets the tone for the entire home. The front door was in need of interest and so we elevated the area by adding large faux sterlitzias, timber stools and solar-powered lanterns for mood at night.

The use of natural materials and subtle lighting adds warmth and sophistication to the space.

# MASTER BEDROOM *and Balcony*



The master bedroom and balcony were transformed into a serene retreat. Soft, romantic hues of greens and blues blend seamlessly with contemporary furniture, creating a peaceful and inviting atmosphere. The balcony, adorned with cozy seating and lush greenery, offers a perfect spot for morning coffee or evening relaxation.

# MASTER BEDROOM *and Balcony*



# CHILDREN'S GUEST BEDROOM *and Bathroom*



The children's guestroom is a delightful haven, combining playful elements with a sophisticated design. Bright, cheerful colors and whimsical décor pieces make this room a joyful space for young guests. The adjacent bathroom features modern fixtures and a tranquil, warm atmosphere with feature lighting and interesting décor elements.



# CHILDREN'S GUEST BEDROOM *and Bathroom*



# PYJAMA LOUNGE

## *Study Area*



The pyjama lounge has been transformed into a versatile, multifunctional space that balances comfort with practicality. Strategic layout changes, including the addition of marble console tables and an antique study desk, create distinct areas for reading, studying, and relaxation. Warmth and texture have been added through timber tables, new textiles, and decorative elements. The result is an elegant yet welcoming room that adapts to various needs while maintaining a cohesive design aesthetic.

# MAIN OUTDOOR *Veranda*



The outdoor veranda is an oasis of relaxation. Designed to be both functional and aesthetically pleasing, it features comfortable seating areas, dining spaces, and plenty of greenery. The design encourages outdoor living and provides a perfect setting for gatherings and quiet moments alike.

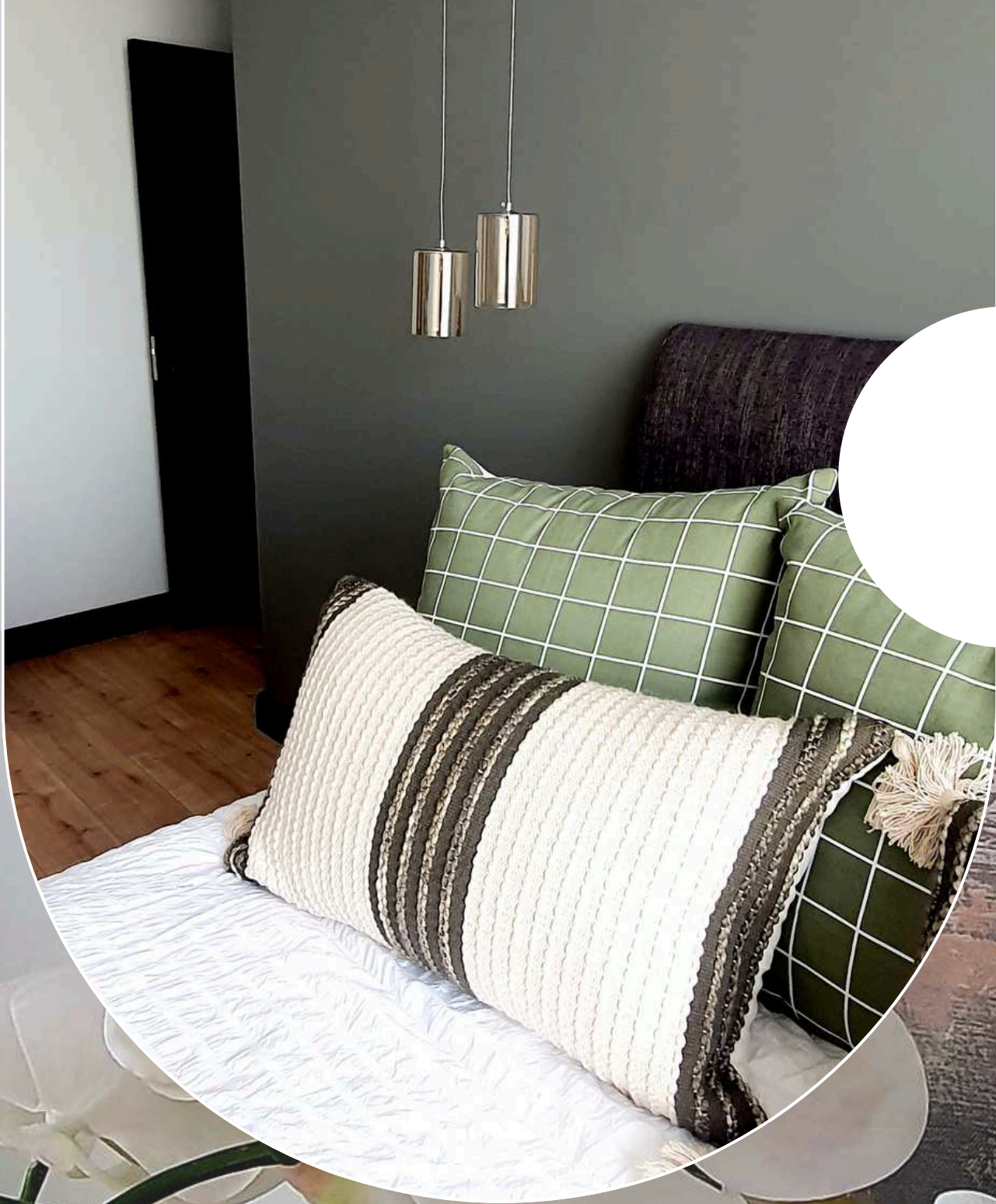
# MAIN OUTDOOR *Veranda*



# POOL HOUSE *Veranda*



The pool house veranda is the ultimate outdoor entertainment area. Complete with a new firepit, it offers a cozy spot for evening get-togethers. The design combines rustic charm with modern amenities, making it a perfect place to unwind after a swim or enjoy a night under the stars.



# HOUSE MASANGO

*Residential Refresh*

[www.eiwood.co.za](http://www.eiwood.co.za)



# MAIN ENTRANCE - FRONT DOOR

*Goyer*



Design By El Wood has transformed a barren foyer at House Masango, into a captivating entrance, embodying the essence of minimalism with a touch of African inspiration. The project features handcrafted elements, such as woven baskets and tribal art, strategically placed to draw attention to the room's natural light and open space. Earthy tones and textures, alongside subtle, yet striking, decor pieces, create a warm and inviting atmosphere. The fusion of modern simplicity with traditional African motifs not only elevates the aesthetic of the foyer but also provides a welcoming embrace to all who enter.

# OPEN LIVING AREAS

*TV Lounge and informal sitting area*



To revitalize a minimalist and contemporary TV lounge, we seamlessly integrated vibrant accents into the existing decor. The neutral sofa and existing feature chairs now harmonizes with bold pops of mustard and hues of blue, creating an invigorating yet balanced color palette. A large abstract painting serves as the room's focal point, drawing the eye and adding depth and intrigue. This blend of striking colors and modern art infuses the space with energy and personality, transforming the lounge into a dynamic and stylish retreat.



# GUEST BEDROOMS

*Ground and first floors*



In the guest bedrooms, Design By El Wood brought a sophisticated touch to each space, tailored to different aesthetic preferences. One room embraces a n elegant neutral scheme, where black accents and a contemporary mirrored bed create a sleek, polished look. The subtle play of light and reflection enhances the room's elegance. In contrast, the other bedroom features vibrant green accents, adding a refreshing burst of color that livens up the space. Both rooms utilize a variety of textures in the bedding, from plush throws to intricately woven fabrics, to introduce depth and warmth, ensuring each guest experiences comfort and luxury.

# PAJAMA LOUNGE *And kids playroom*



In the pajama lounge, we crafted an inviting haven with warm tones and natural textures, creating a cozy ambiance perfect for relaxation. This welcoming space is complemented by a playful kid's area behind it, featuring arched painted wall bookshelves in bright yellow, adding a cheerful and vibrant touch. An empty gallery wall stands ready to showcase the children's original art, fostering creativity and personal expression. Storage solutions are both stylish and practical, with multi-functional blue velvet ottomans and fun bean bag chairs that the kids adore. A low, wall-mounted storage unit doubles as a kid-friendly creative center, offering a dedicated surface for drawing, crafting, and imaginative play, ensuring the area is both functional and delightful for all ages.

# KIDS BEDROOM

*a Multi-purpose space*



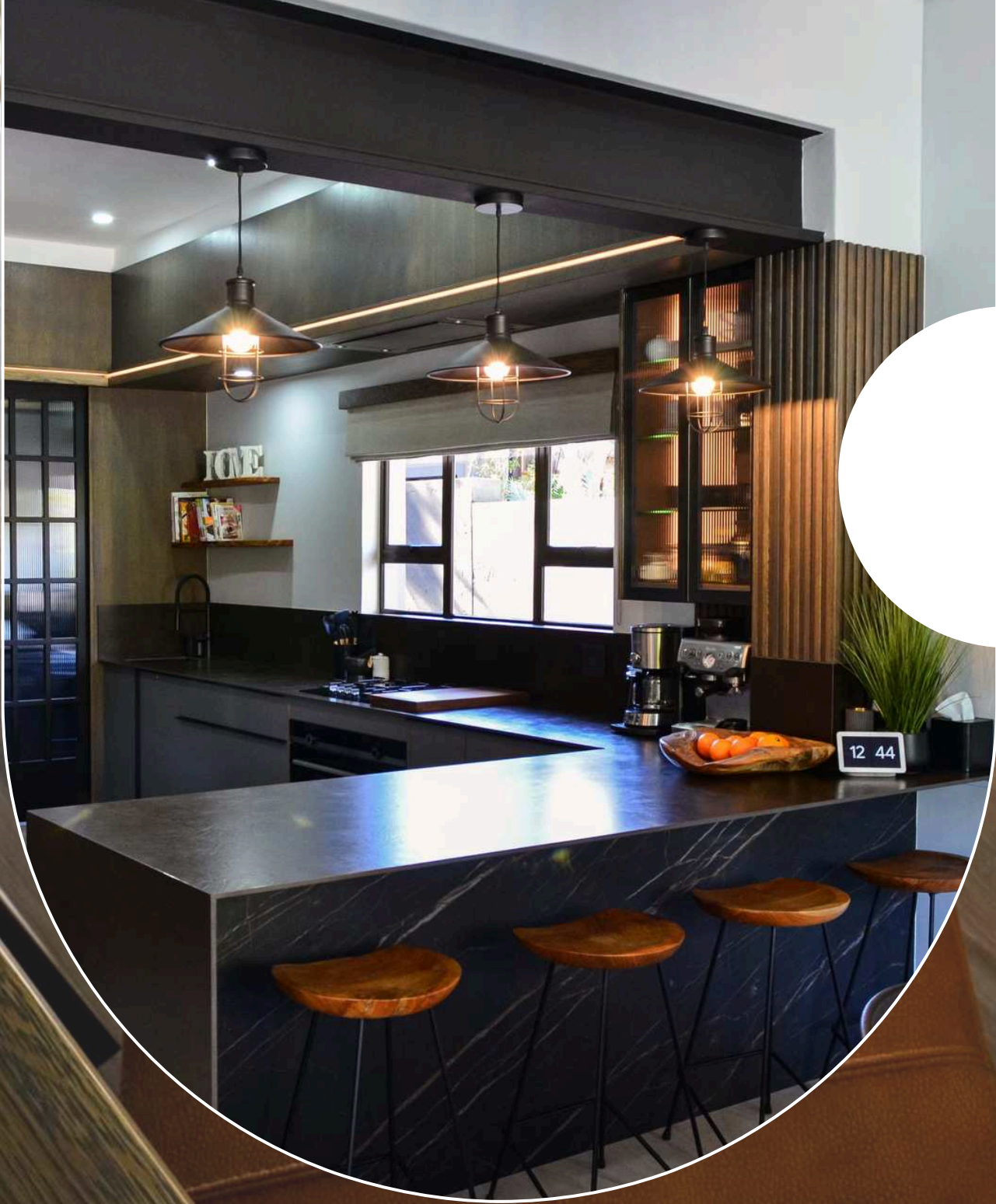
In the shared boys' bedroom, we created a cohesive and charming space, harmonizing the needs of a young child in a cot and an older sibling in a twin bed. The theme of empty wall art frames, ready to be filled with the boys' creative works, continues into this room, encouraging their artistic expression. By using matching throw pillows and coordinating bedding colors for both the cot and twin bed, we ensured the room feels unified and inclusive. A playful pop of green in the form of an arch painted around the cot adds a focal point and a sense of fun. Despite the small size and the need to retain existing furniture, we devised a layout that optimizes the room's flow, making both sleeping areas accessible and comfortable. The thoughtful design blends functionality with warmth, creating a delightful and practical shared space.

# MASTER BEDROOM

*Serene Elegance*



In the master bedroom, Design By El Wood elevated the existing elegant design, enhancing its charm and sophistication. The feature wall and luxurious neutral velvet bed set the stage for our updates. We introduced feature lighting that adds a touch of glamour and warmth, perfectly complementing the room's ambiance. Gorgeous wall art and luxurious bedding with gold accents were added to infuse the space with opulence and elegance. A new plush area rug and a bed-end blanket box were incorporated to unify the greys and warmer tones, while also providing additional storage. These thoughtful touches harmonized the space, creating a master bedroom that exudes both comfort and refined style.



# HOUSE GRANT

*Full Renovation*

[www.eiwood.co.za](http://www.eiwood.co.za)

# MAIN OPEN-PLAN LOUNGE AREAS *And Entrance Foyer*



The open-plan living space, originally enclosed, was transformed by opening up the space. This created a new area combining the television lounge, entrance foyer, and patio-braai area, enhancing movement and light. Consistent floor tiles, paint colors, and finishes ensured design continuity from the kitchen-dining area. Feature pendants, wall sconces, and recessed LED ceiling lights provided both ambiance and functionality. A custom built-in TV unit matched the kitchen finishes for a cohesive look. The minimalistic foyer highlighted the home's architecture, leading to the bold new black front door.

# OPEN-PLAN KITCHEN *And Dining Area*



The kitchen transformation began by opening up the originally enclosed space, allowing natural light to flood in and create the desired dark and moody atmosphere. Collaborating with Gelis Kitchen Experts, the design featured an industrial edge with minimalist clean lines, adhering to the philosophy of "a place for everything and everything in its place." Black steel I-beams, introduced for structural support, became a striking feature, complemented by industrial-style lighting. Warmth was added with oak Monocoat timber slats and cupboard fronts, enhancing the natural beauty of the existing dining table and wall art.

# OPEN-PLAN KITCHEN *And Dining Area*



To address the visibility of the scullery from the dining room after opening up the space, custom glass sliding doors were designed to slide into the cabinetry, maintaining natural flow and traffic circulation. The dining room became an extension of the kitchen, presenting a challenge for positioning the dining table to allow ergonomic flow around the new kitchen counter. Instead of extending the boundary wall, the table was offset, utilizing the existing bay window to create a built-in bench for seating at the head of the table, framing the view from the kitchen. Cohesive lighting, wall colors, and finishes were selected to harmonize with the kitchen design.



# ENTERTAINMENT WING

## *Bar and Living Areas*



The Bar Lounge transformation involved converting an unused one-bedroom guest wing into a stylish entertainment area accessible from the television lounge. Addressing the lack of storage, custom-designed units were added beneath the stairs, matching the new bar's design. Feature LED lighting and a new fireplace create a cozy atmosphere. Instead of another dining area, various conversation nooks and built-in wall shelving was added for versatility.

# CHARCOAL GUEST SUITE *And Pajama Lounge*



he previously outdated bedroom and en-suite bathroom in the guest wing have been transformed into a luxurious and contemporary retreat. The bedroom now features built-in wardrobes, a bespoke timber slat headboard with wall lights to replace conventional bedside lamps, and a dark, moody palette with a charcoal feature wall and rose accents. The en-suite bathroom showcases new Cemcrete walls, handmade Wolkberg Casting Studios wall tiles, a custom-designed vanity, and subtle LED lighting. Additionally, a custom built-in pajama lounge with seating, a TV plasma unit, and cleverly integrated storage has been designed to enhance functionality and style.

# CHARCOAL GUEST SUITE *And Pajama Lounge*

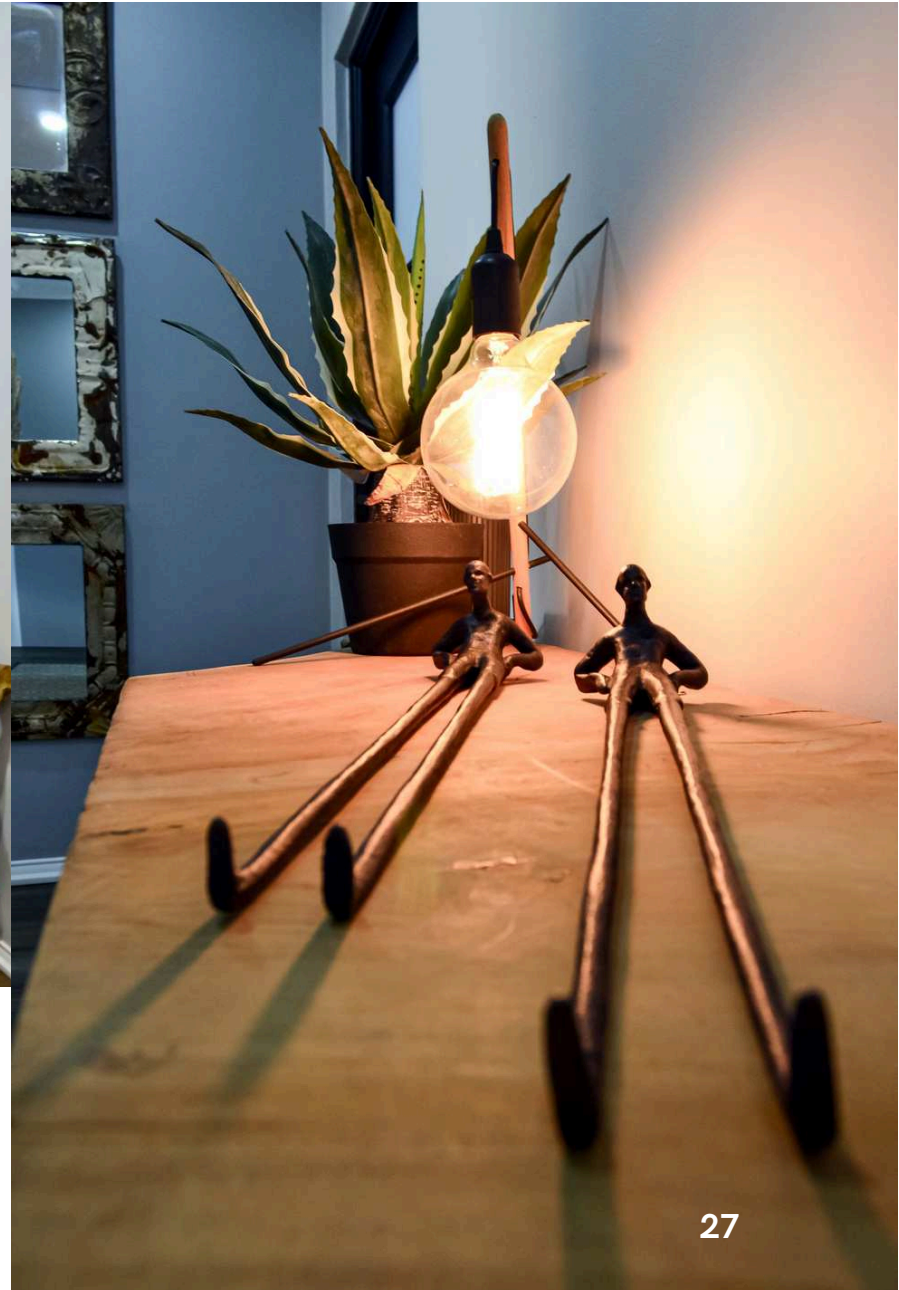


# HOME OFFICE and Stair Landing

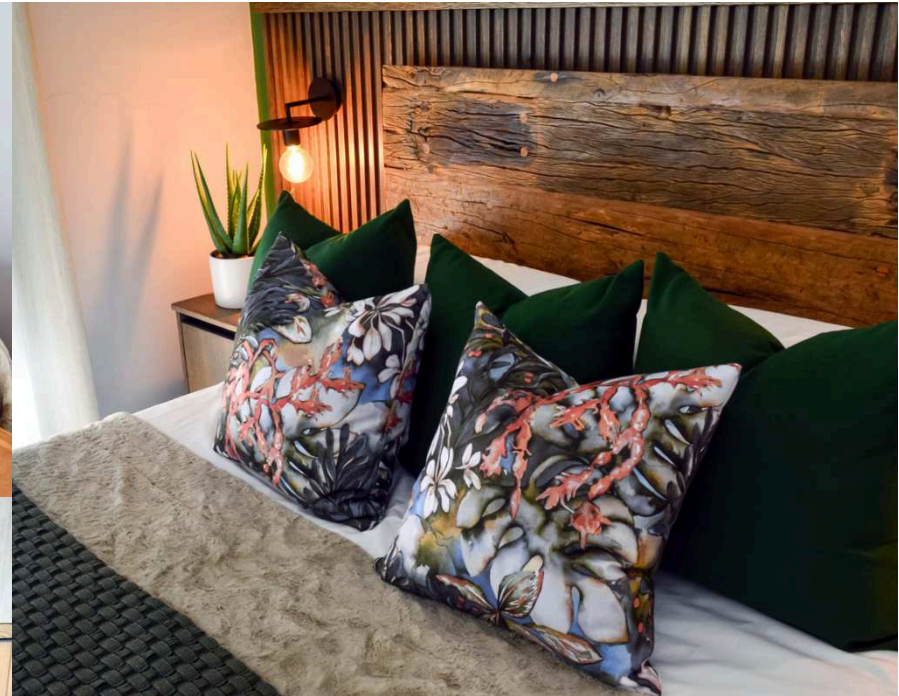


The adjacent study features a new bespoke sliding door from the guest suite and includes fully built-in desks and storage, featuring a sit-stand desk for ergonomic proficiency and a live-edge coffee counter nook, complemented by leather chairs and custom scatters. The moody palette extends into this space, balanced with neutral tones and hints of nature, incorporating natural materials to create a focused environment. The study leads out onto a stair landing corridor, where the theme of natural wood elements and live-edge furniture continues, accented with interesting decor to set the mood and create an inviting atmosphere.

# HOME OFFICE *and Stair Landing*

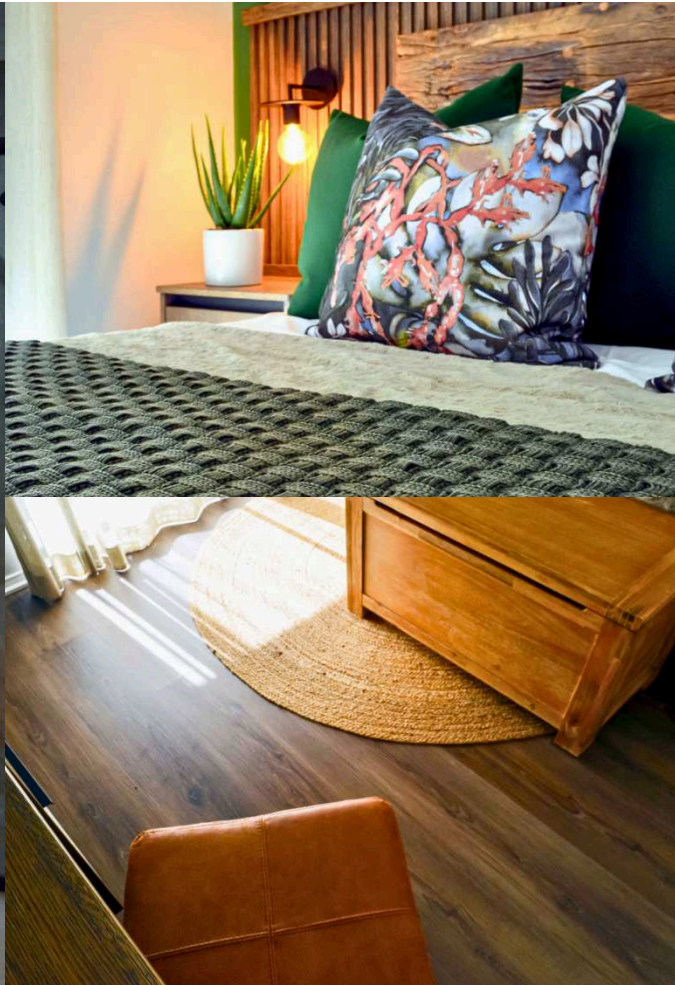


# GREEN GUEST BEDROOM *and En-suite Bathroom*



The second guest bedroom also received a stunning transformation with a brand new built-in wardrobe and a bespoke timber slat headboard, including new wall lights to replace conventional bedside lamps. Departing from the darker hues of the other spaces, we introduced pops of green to complement the warmth of the timber and the vibrant green Acacia tree visible from the balcony. The en-suite bathroom mirrored the design of the other bathrooms, featuring Cemcrete walls, Wolkberg Casting Studios wall tiles, a custom-designed vanity, and subtle LED lighting, creating a cohesive and luxurious feel throughout the home.

# GREEN GUEST BEDROOM *and En-suite Bathroom*



# MASTER BEDROOM and En-suite Bathroom



In the master bedroom, we used a bold, dark ocean blue as the accent color to evoke soothing serenity. Instead of wall scones, we added bold feature pendants on either side of the bed in a warm natural rattan material to enhance the coziness of the room. The wardrobe and vanity, similar in style to the other rooms, are significantly larger and feature LED strip lighting for an enhanced luxurious feel. The master bathroom continues the cohesive design but includes additional feature pendants and an artificial Strelitzia for added elegance. While the handmade wall tiles maintain the same color palette, they boast a distinct design to set this bathroom apart from the others, creating a unique and refined retreat.



# MASTER BEDROOM *and En-suite Bathroom*



# EXTERIOR BALCONIES *and the home gym*



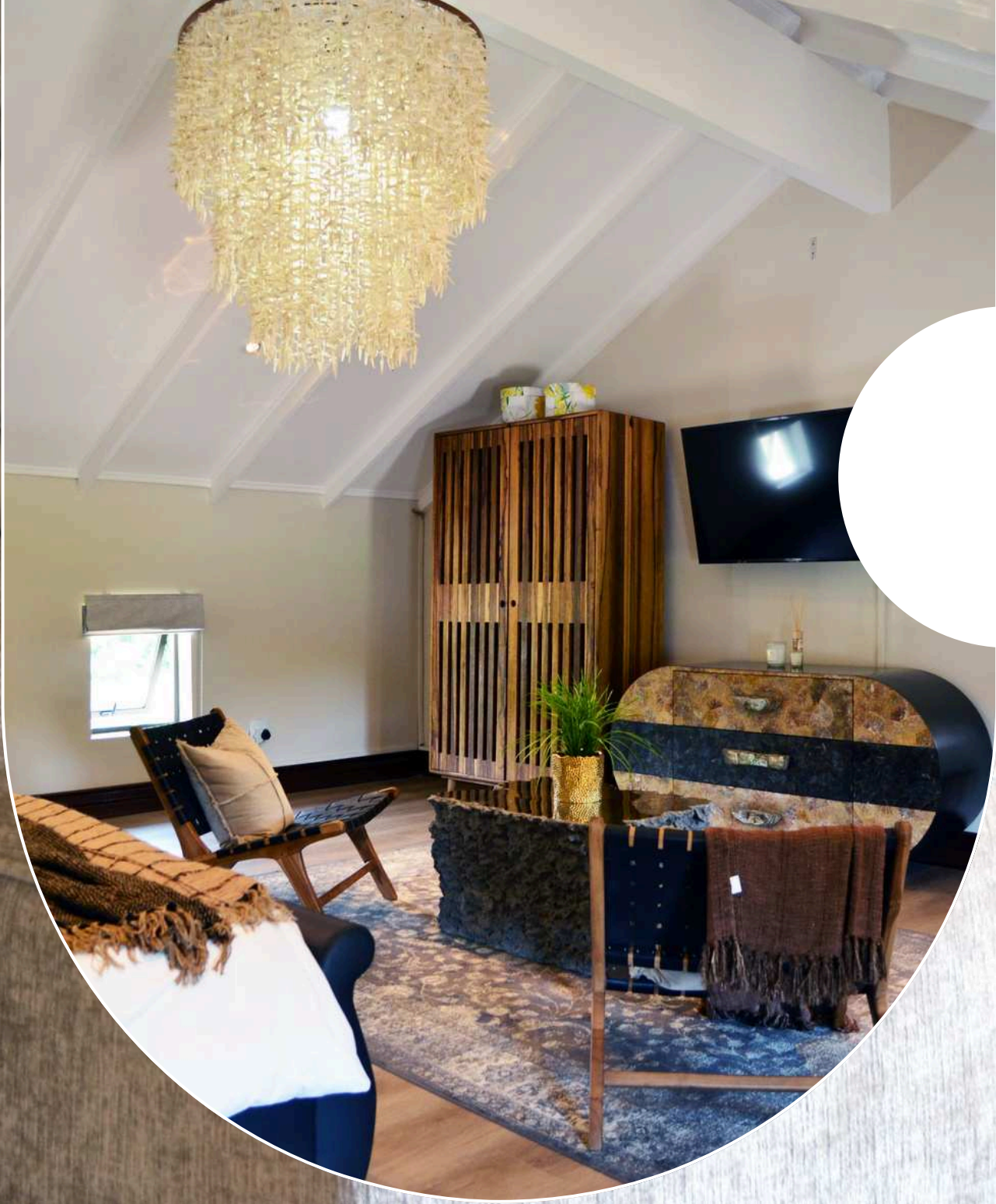
Each bedroom includes a balcony designed for relaxation and enjoyment. The guest balconies feature a stylish occasional chair with a side table, perfect for savoring a morning cup of coffee in the warm Gauteng sun. The master balcony, requiring more thoughtful design, now boasts a newly built pergola and a concrete wet bar for sundowners. Additionally, we included built-in benches with outdoor cushions and a striking concrete coffee table, tying together an industrial look. Adjacent to the master bedroom, a new gym has been created from a former storeroom. This gym features large wall mirrors and custom built-in storage solutions with an oak finish, seamlessly blending with the rest of the home's aesthetic.

# THE POWDER ROOMS

*Guest wing and main*



The home also includes two powder rooms, one in the main house and the other in the guest wing. Both rooms feature Cemcrete finishes on the walls and hand-made wall tiles for the backsplashes, maintaining the artisan theme. The feature lighting in these powder rooms steals the show, utilizing the tall ceilings with a bold collection of hanging pendants in natural and black colorways. This lighting is further enhanced by feature mirrors and custom-built vanities with additional feature lighting, creating a stunning and cohesive design.



**HOUSE WOODS**  
*The Guest Suite*

[www.eiwood.co.za](http://www.eiwood.co.za)



# THE GUEST *Bedroom*



At House Woods, we transformed a guest bedroom that was in desperate need of an update and an elevated feel. By utilizing most of the existing furniture and adding new bedside tables and occasional chairs, we revitalized the room's personality. We replaced the outdated pendant light with a large coco bean chandelier for a stunning focal point and added a floor-standing timber mirror and Roman blinds to complete the cozy atmosphere. Drawing inspiration from existing pieces, we used natural teak timber and mixed metallic accents to enhance the space. The result is a beautifully updated guest bedroom that balances comfort sophistication and elegance.

# THE EN-SUITE *Bathroom*



The en-suite bathroom underwent a full renovation. We replaced the outdated wall tiles with a Cemcrete finish and added large sintered porcelain slabs as an accent in the shower. The vanity was custom-designed and built as an extension of the existing wardrobe in the bedroom, featuring gorgeous teak slats and a round teak mirror. This cohesive design ties the bedroom and bathroom together, creating a seamless and luxurious feel throughout the guest suite.



*To view more projects*  
visit us at [www.eiwood.co.za](http://www.eiwood.co.za)

 [irene@eiwood.co.za](mailto:irene@eiwood.co.za)

 [@interior.designbyeiwood](https://www.instagram.com/interior.designbyeiwood)

 [@DesignByEiWood](https://www.facebook.com/DesignByEiWood)

 081 041 4182