



Portfolio

Commercial Interior Design

By Ei Wood

www.eiwood.co.za



ABOUT DESIGN BY EI WOOD

We design spaces that serve people by finding human-based solutions that are user-specific. Not just in how they function, but the successful design of an interior uplifts spirits & evokes positive change.

As a passionate Interior Design Studio, we find value in designing honestly, with strength & dignity. We stay true to function but also aim to inspire through creative thinking while staying finely tuned to the client's needs through constant and clear communication.

www.eiwood.co.za

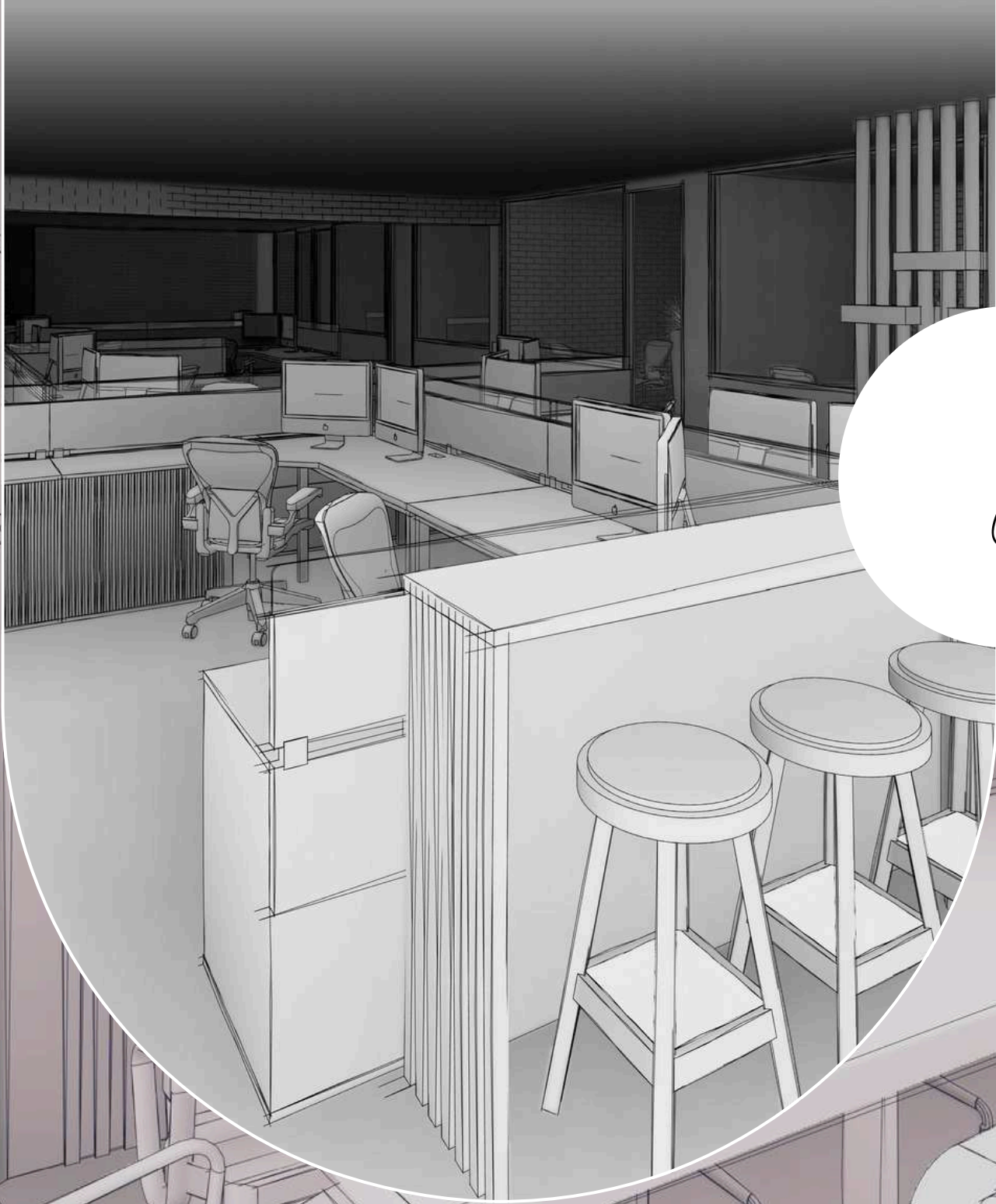


Portfolio

Contents

Venter Consulting Engineers - Corporate Office Design	02
Monk's Medical - Health Practitioner's Office Design	10
Pax Divitiae - Corporate Office Design	17
South African National Blood Service - HQ Design	25
Contact Us	33





VCE
Corporate Office Design

www.eiwood.co.za





THE PROJECT

Brief

The client sought to transform their traditional, dark, and outdated office space into a bright, open-plan environment that fosters collaboration and team spirit. They required an innovative design balancing focused work with collaborative activities, modular functionality, and an inclusive philosophy.

The new design needed to align with the company's corporate identity, attracting innovative young minds and signaling to clients their forward-thinking values of innovation, creativity, and excellence. Maximizing natural light to create a welcoming and inspiring atmosphere, while accommodating more staff within the existing exterior perimeter, was essential.

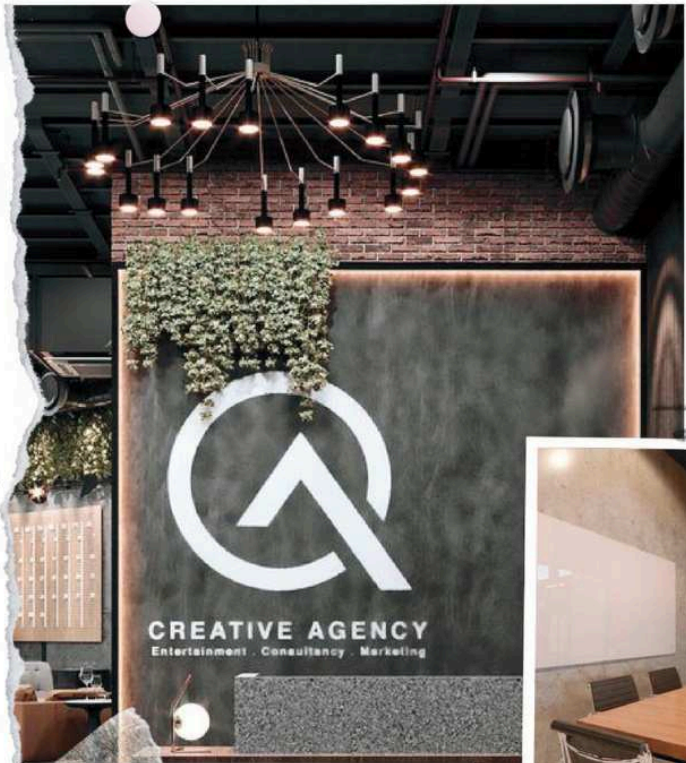
We achieved this transformation by embracing an open-plan methodology, creating a brighter, more collaborative environment. Key design elements include:

- Full Glass Offices: Positioned against existing natural windows to allow light to filter through the entire space.
- New Staff Canteen: A welcoming space with a quiet pod for focused work or private calls.
- AV Boardroom: Equipped with the latest audiovisual technology for seamless presentations and virtual meetings.
- Small Meeting Room: Designed for virtual meetings, ensuring privacy and state-of-the-art connectivity.
- Open-Plan Office Space: Integrated with drop-down projector screens and a collaboration counter for large in-house meetings.

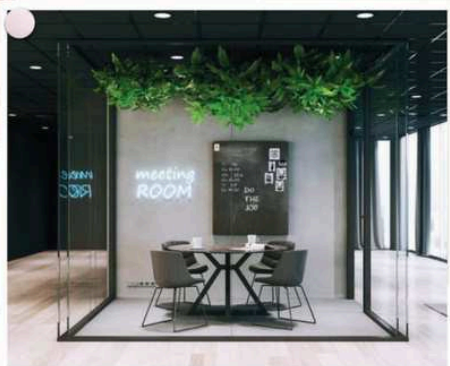
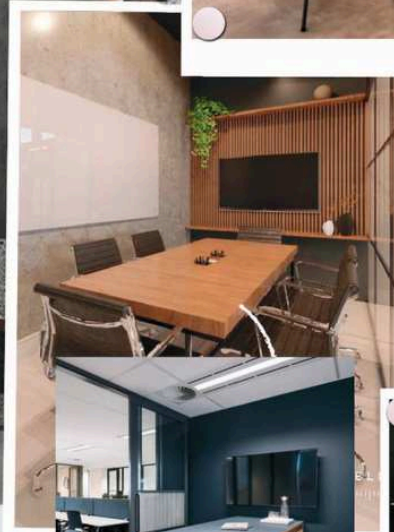
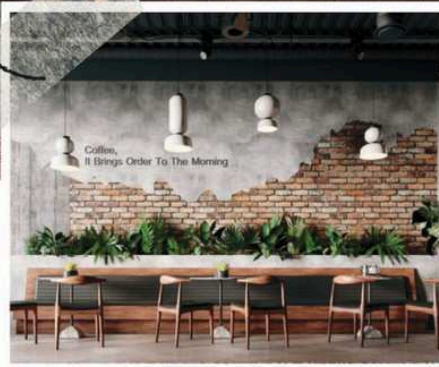
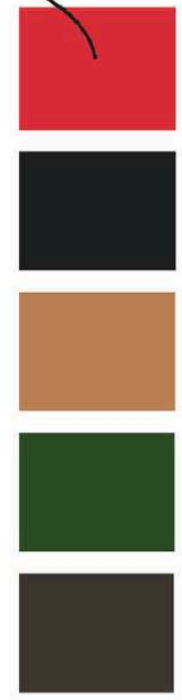
The design aesthetics maintain an industrial-chic style, enhanced with biophilic elements to promote focus and creativity. This approach aligns with the corporate identity, creating an inspiring atmosphere that attracts innovative young minds and demonstrates to clients their commitment to innovation, creativity, and excellence.

MOOD BOARD

Industrial Chic Design



Combine CI with complimentary calming colours

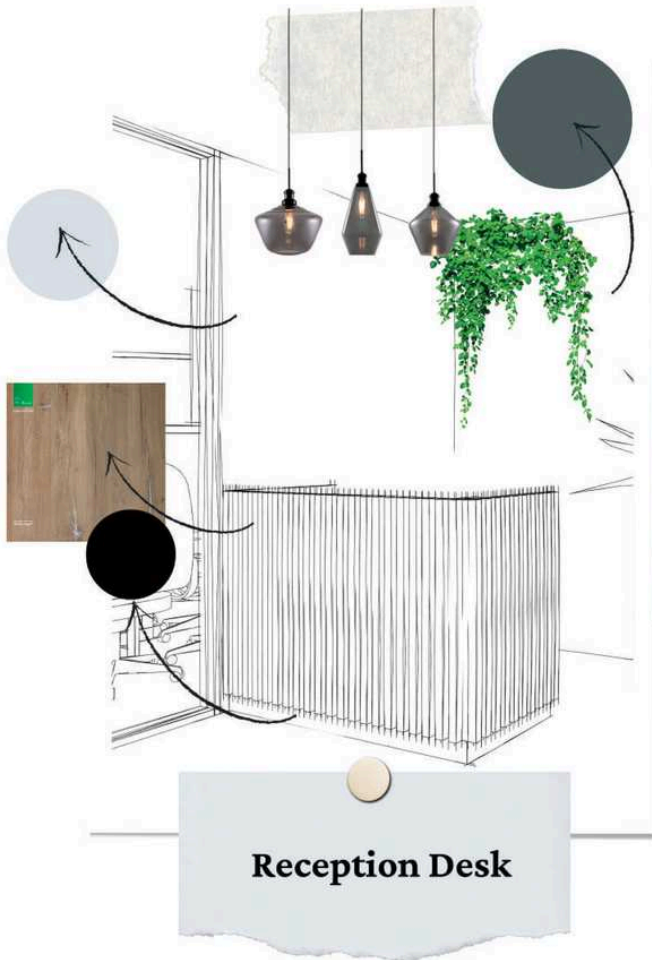


Balance of wood, black and green.

Natural textures to complement .



RECEPTION AREA - DETAIL DESIGN

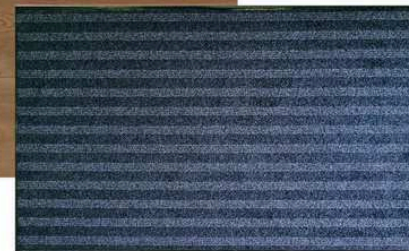


Reception Desk

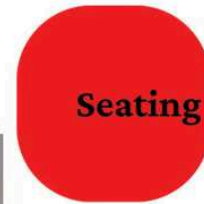
The reception desk features a slatted wood-look detail design and will include built-in storage with lockable drawers. a Black kickplate will serve as a break between the wood-look floor and wood-look slats. Slats to be on a black backboard. a Large over-head feature light grounds the space and artificial plants on a dark grey wall creates a touch of biophilic greenery to add a sense of calm and invite people closer.



*Wood-look Floor - Columbian Oak 649M
Cushioned Vinyl*



*Include heavy-duty
scraper walk-off Matt
at Entrances*

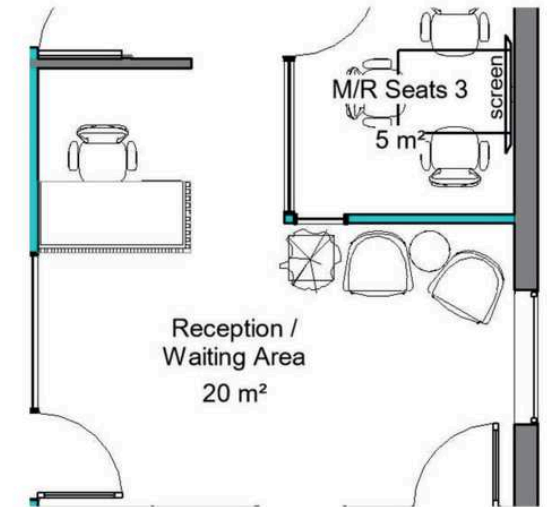


Seating Area

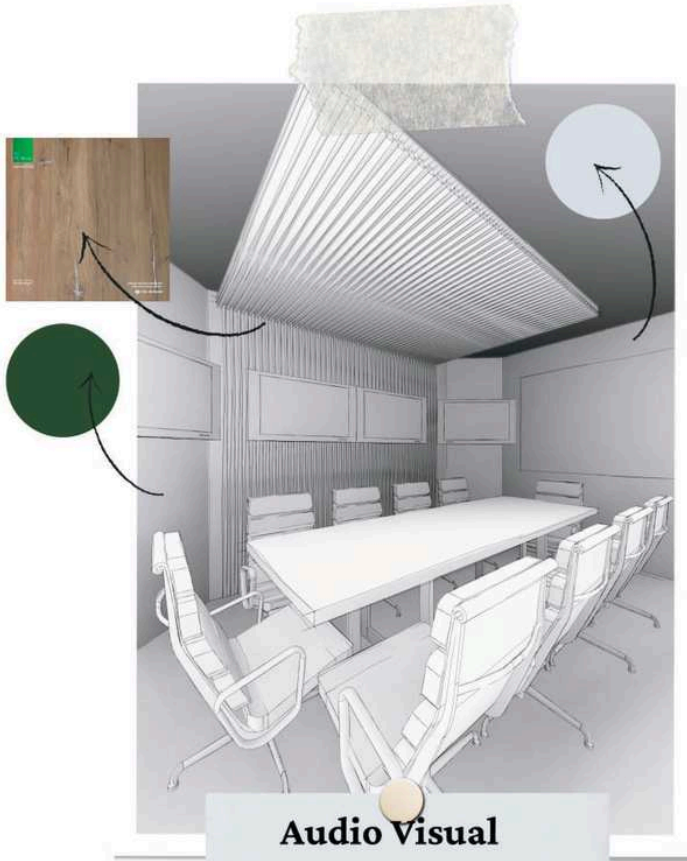


VENTER CONSULTING ENGINEERS

The reception chairs to be interesting and embody the industrial chic-design, yet be small enough to fit the space. Dark chairs against a dramatic red wall will serve as a WOW-impact and leave a lasting impression. Include Logo signage on the wall with LED Backlight.



MEETING ROOMS / BOARDROOM



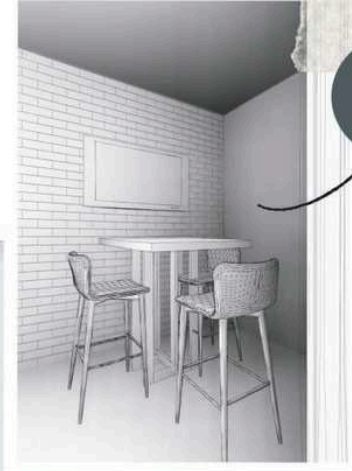
Audio Visual Boardroom

Retain the existing boardroom furniture and adapt to receive audiovisual equipment. Keep the colors muted in this space to promote calm and focus, with a feature green colour behind the main screens to promote a natural feel against a timber slatted acoustic ceiling feature. Glass writing boards against a light grey wall will elevate the space and serve a functional purpose. Keep lighting functional with LED downlights and strategically placed LED Strip lights.

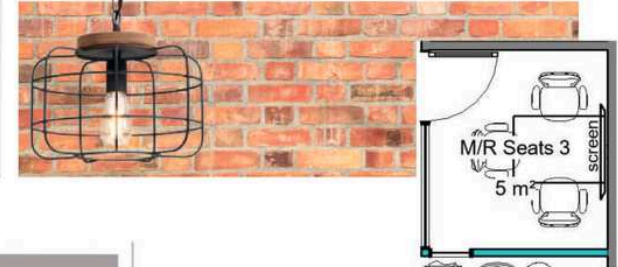
Glass writing board



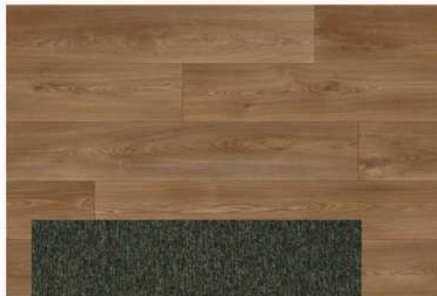
3 - Seater meeting room



In the 3 seater meeting room the brick wall is to be retained to lean into the industrial-chic design theme. Add a darker grey feature colour for depth and keep the floor a natural wood-look vinyl to retain warmth and an inviting feel. For an additional impact, include a feature pendant light.



Wood-look Floor - Columbian Oak 649M
Cushioned Vinyl in small meeting rooms/pod

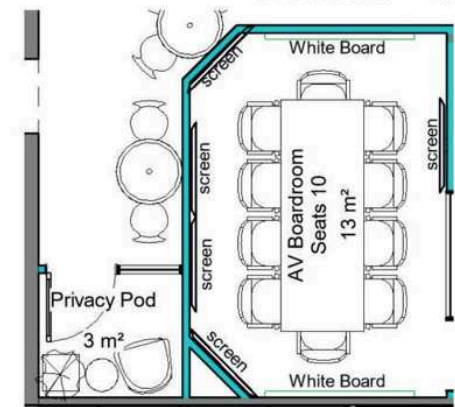


Broadloom carpet in Influence - Max Lust to elevate and enhance sound absorption



Privacy Pod

Echo the same chair in the pod from the reception area to create a sense of cohesive design. Use wood-look vinyl flooring and to promote calm in this area, introduce the green feature wall colour and light grey tones.



STAFF BREAKAWAY AREA

Hanging plant feature inspiration



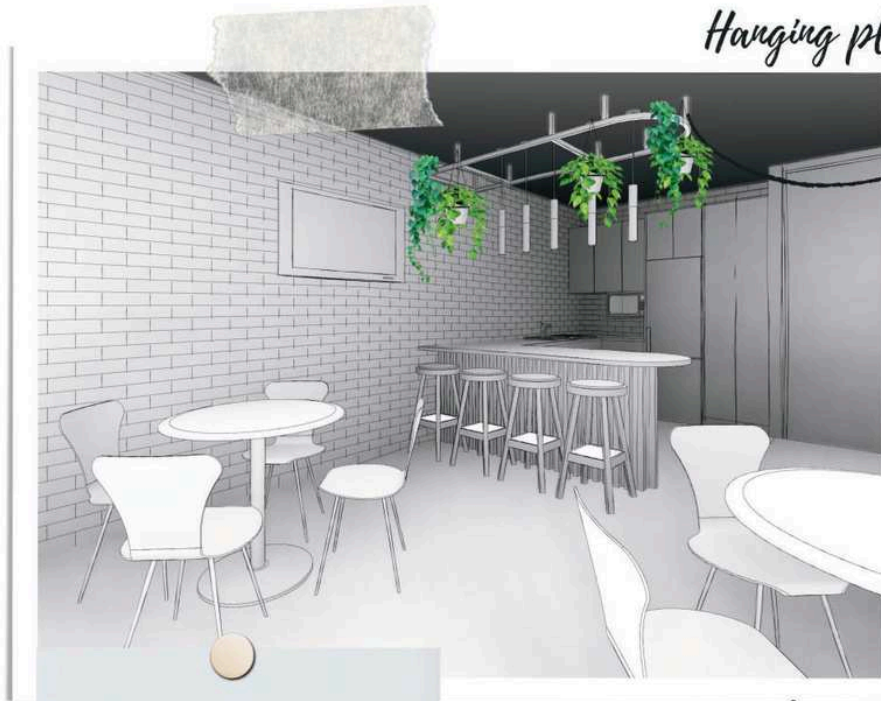
Wood-look details

Concrete look tops



Feature kitchen colour

Cupboard fronts colour



Break Away Area



Retain brick walls where applicable



Retain brick, introduce wood-look floor and green feature walls.

The new break-away area will embody a feeling of relaxation inspired by industrial loft design. To keep the uniformity throughout the spaces, the existing brick is to be retained, and wood elements, artificial plants and green feature walls will be added to create the familiar inviting atmosphere.

Further industrial elements such as a concrete-look top and steel feature bulkhead with loft-style pendants, add to the industrial look.



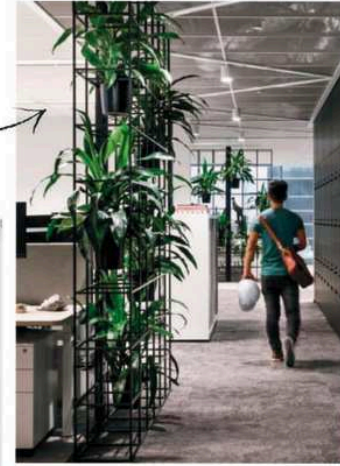
The furniture chosen should work well with the industrial theme but be timeless in the sense that it would work in a multitude of settings.

CLOSED OFFICES/ OPEN PLAN

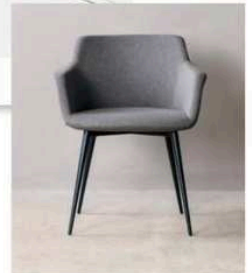
Privacy Screen Inspiration



Open-Plan Office



Closed Offices



Retain all existing furniture/ add new to match where needed. Include wood-look bar-height table for hotdesk / team meeting purposes. Continuing the industrial feel, retain the existing brick walls, make use of the corporate colours to create unity with the reception area and add artificial foliage to privacy screens to add calm and interest.

Replace the screens with updated, sleeker, acoustic screens through-out.

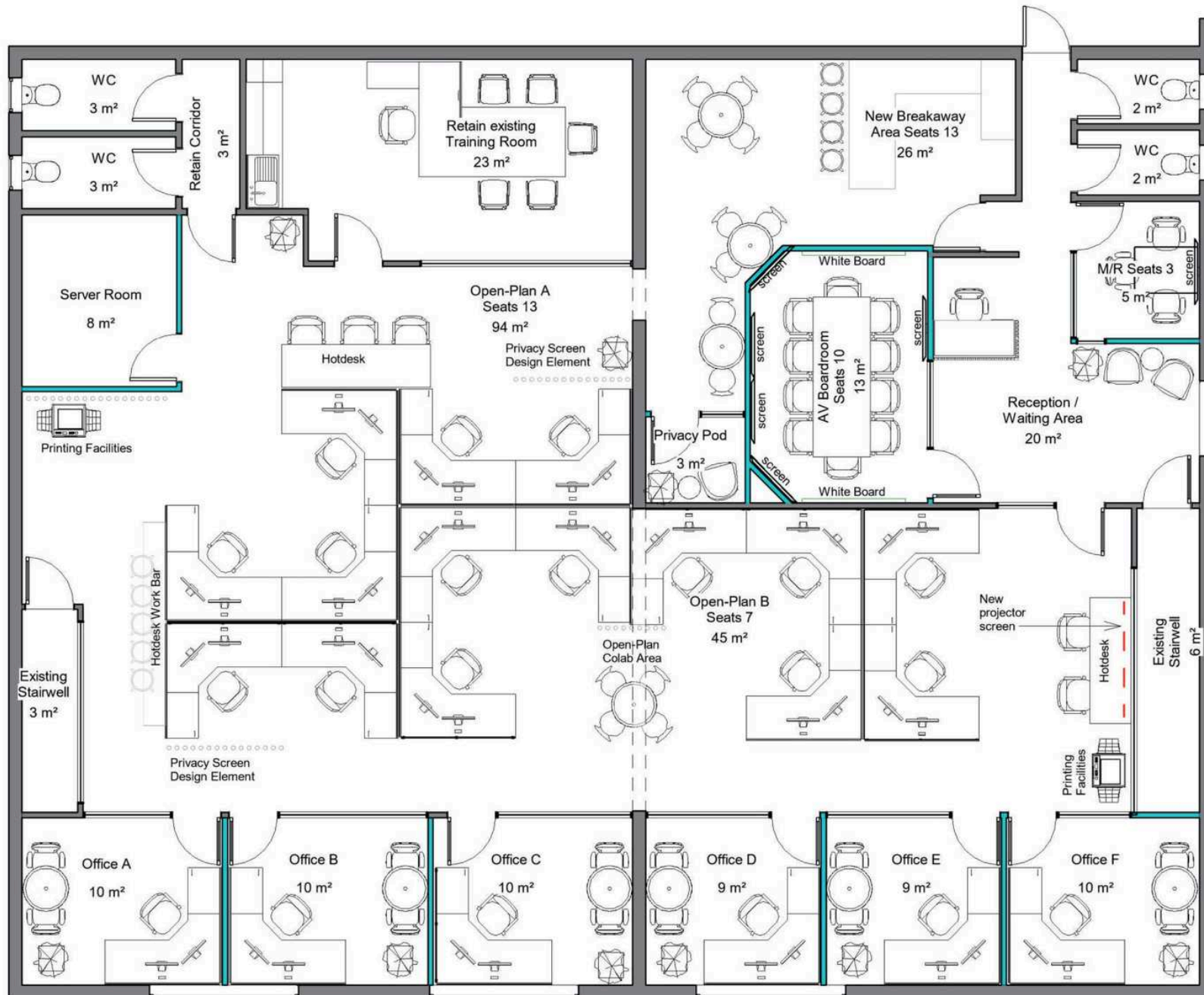
Retain brick walls where applicable



Replace existing carpet with higher quality in corporate colours.

Include heavy-duty scraper walk-off Matt at Entrances

SPACE PLAN OVERVIEW

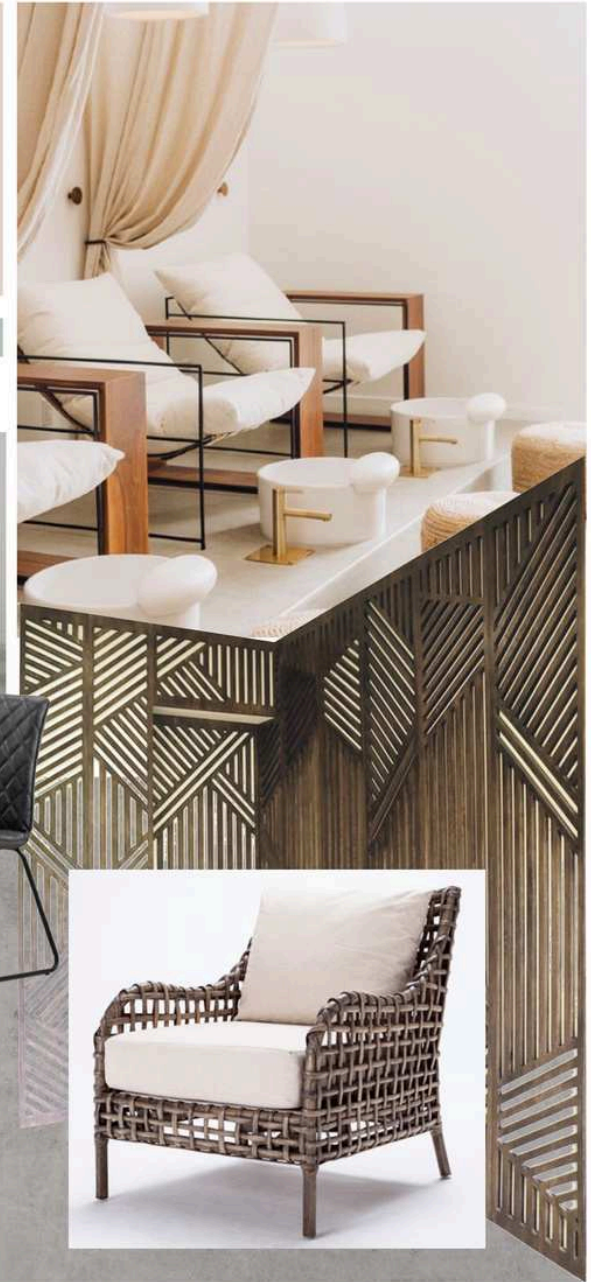




MONK'S MEDICAL
Health Practitioner's Office Design

www.eiwood.co.za

PRIMARY PALETTE

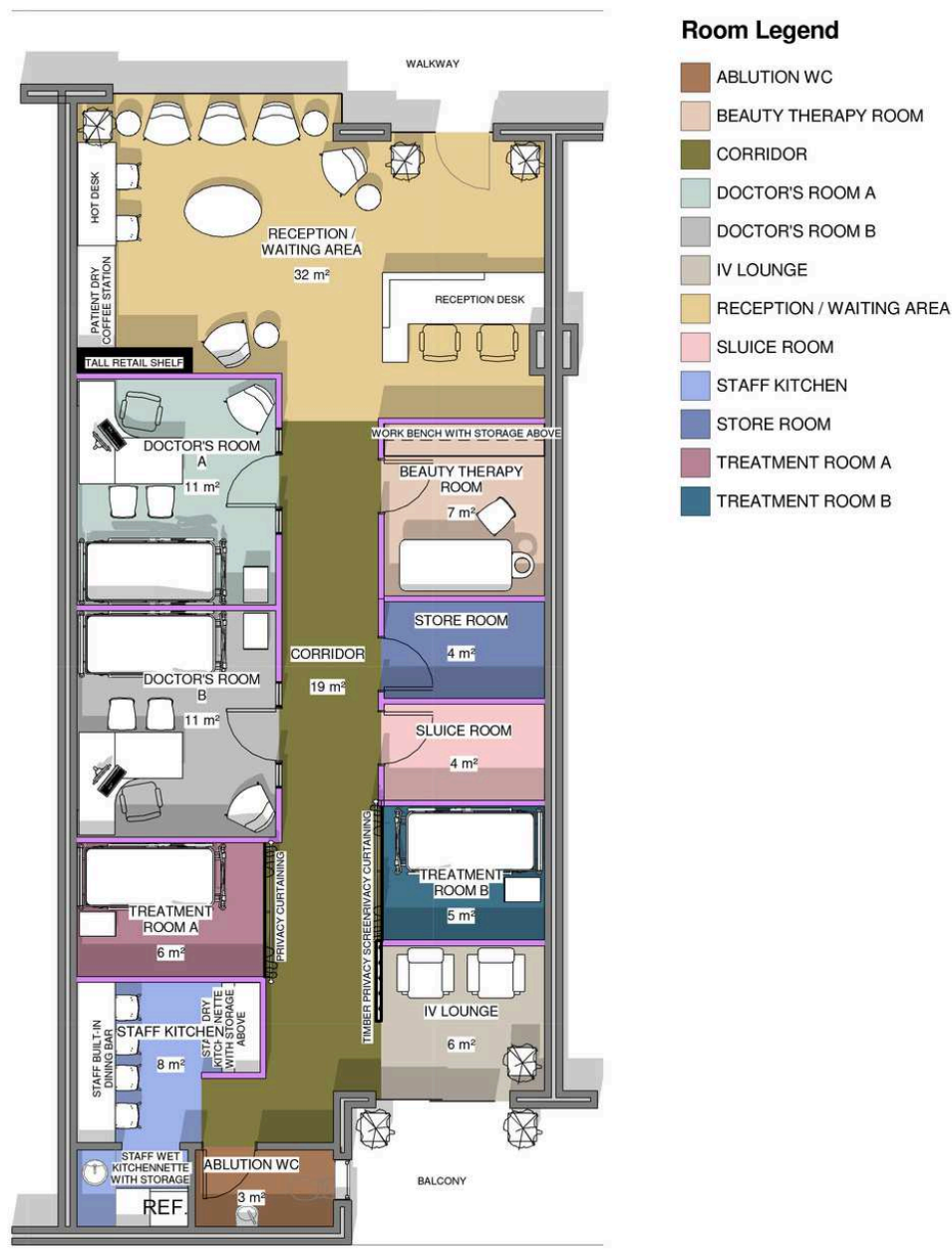


SECONDARY PALETTE



MONK'S MEDICAL PRACTICE
Interior Inspiration

Natural. Understated Opulence. Warm. Calm. Biophilic. Contemporary High-End Look



THE PROJECT

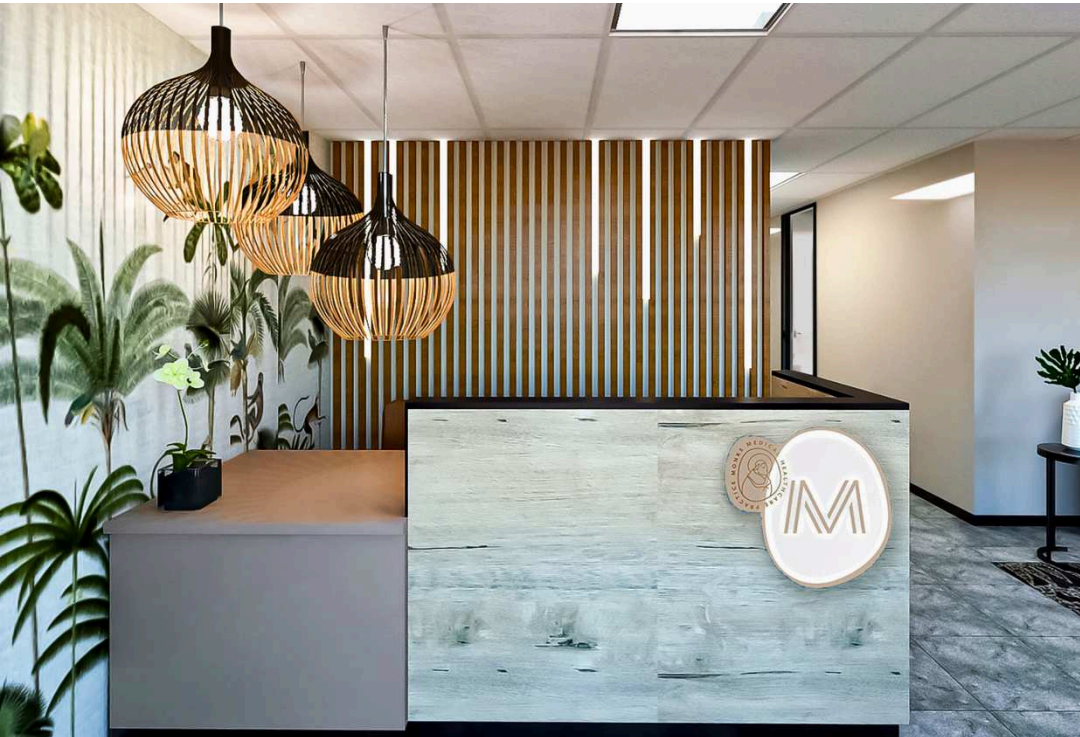
Brief

Design By El Wood successfully completed a virtual interior design project for Monk's Medical, an aesthetics practice in Plettenberg Bay. The challenge was to create a high-end, functional space within limited square meters at their new Monk's Square office. The design incorporated a reception area with a self-serve coffee bar, two doctor's offices, a beauty therapy room, storage, a Sluce room, two treatment rooms, staff kitchen, powder room, and an IV lounge.

To overcome space constraints and ensure ergonomic flow, the team implemented clever storage solutions, built-in desks, and custom cupboards. Luxurious curtains were used in place of doors where appropriate to maximize space efficiency. The design achieved a distinctive, upscale corporate identity through the use of striking tropical wallpapers, timber and black accents, and biophilic elements. These choices created a warm, relaxing, yet sophisticated atmosphere that sets Monk's Medical apart in the aesthetics industry.



PATIENT RECEPTION *and Waiting Area*



The reception waiting area of Monk's Medical showcases a harmonious blend of functionality and sophisticated design. At its core is a built-in coffee bar, offering patients a self-serve experience that adds a touch of luxury to their visit.

Timber finishes were carefully chosen to infuse the space with warmth and natural elegance. These are artfully contrasted with black accents, visible in select furniture pieces, joinery designs, and lighting fixtures. This interplay of warm wood tones and sleek black elements creates a refined, contemporary aesthetic that immediately signals a high-end medical practice.

The design's true distinguishing factor lies in its embrace of biophilic elements. Strategically placed plants bring life and freshness to the area, while a palm-inspired area rug adds a soft, tropical touch underfoot. Rattan Malawi waiting chairs introduce an organic, textural element that complements the overall nature-inspired theme.

The crowning touch is a striking jungle-themed wallpaper, which serves as a captivating backdrop. This bold choice elevates the entire space, transforming what could have been a standard waiting area into an immersive, calming environment.

Together, these design elements coalesce to create a waiting area that's far from ordinary. It sets the stage for a premium patient experience, aligning perfectly with Monk's Medical's high-end aesthetics services and creating a memorable first impression for all who enter.

DOCTOR'S ROOMS

Office and Patient Care



The doctor's offices seamlessly blended functionality and aesthetics in a compact space. The design featured a built-in office desk with integrated storage, maximizing efficiency for both administrative work and patient consultations. A basin was incorporated for practical use, along with ample lockable storage for equipment and medicine.

Continuing the Monk's Medical brand identity, warm timber finishes with black accents were carried through from the reception area. The standout element was the bold jungle-inspired wallpaper, serving as a striking backdrop for the office desk and for virtual consultations. This vibrant feature, combined with indoor plants, enhanced the biophilic design philosophy and created a positive energy that set patients at ease. The clever use of space, cohesive aesthetic, and attention to both functionality and patient experience resulted in a harmonious and efficient space for both doctor and patient alike.

THE PATIENT *IV Lounge*



The IV lounge masterfully addressed space constraints while prioritizing patient comfort and aesthetic appeal. A bespoke timber screen was implemented to ensure privacy, cleverly partitioning the area. The layout was thoughtfully arranged to provide access to the exterior balcony, offering patients refreshing views of the sky during their treatments.

Comfort was paramount in this space, achieved through the use of plush lounge chairs and ottomans, allowing patients to fully relax and elevate their legs during IV therapy sessions. The design continued the practice's commitment to creating serene environments through carefully chosen wallpaper. Taking inspiration from the practice's location in Plettenberg Bay, a stunning ocean landscape mural was incorporated, seamlessly blending the interior with the ocean scent from outside.

Despite the compact nature of the space, biophilic elements were ingeniously integrated. An area rug featuring plant motifs hinted at the benefits of bringing nature indoors, while a single, well-placed potted plant echoed this principle without overwhelming the limited space. This approach maintained the cohesive feel of the entire practice while adapting to the specific needs and constraints of the IV lounge.

The result was a tranquil, luxurious space that optimized patient comfort and wellbeing, making the most of its coastal location and limited square footage through clever design choices and attention to detail.

THE EXTERIOR *Balcony*



The exterior balcony further enhanced the coastal theme and biophilic elements of Monk's Medical practice. The floor was cleverly covered with pebbles, creating a unique sensory experience reminiscent of a pebbled beach. While not typical of South African coastlines, this design choice effectively evoked a universal coastal atmosphere, engaging patients' imaginations and reinforcing the seaside locale of Plettenberg Bay.

To address privacy concerns and create a more intimate outdoor space, tall potted plants were strategically placed along the balcony's edge. These lush green additions served multiple purposes: they provided a natural screen from the neighboring balcony, seamlessly extended the interior's biophilic design to the exterior, and contributed to a sense of lush, verdant abundance.

The coastal theme was further accentuated by the addition of two sculptural birds. These artistic elements were a subtle yet effective nod to the seagulls commonly seen in the area, reinforcing the practice's connection to its seaside location. The birds added a touch of whimsy and visual interest to the space, inviting patients to engage with their surroundings and potentially sparking moments of joy or relaxation.

This thoughtful balcony design transformed what could have been a simple outdoor area into an extension of the therapeutic environment. It became a multi-sensory space that complemented the interior design while offering patients a breath of fresh air and a moment of connection with nature.



PAX DIVITIAE
Corporate Office Design

www.eiwood.co.za



THE PROJECT

Brief

Pax Divitiae approached us to design their new office space, and I knew we were embarking on an extraordinary project. Their CEO, a vibrant innovator, met me on-site, radiating enthusiasm as he shared his vision for a revolutionary workspace. From the outset, it was clear that Pax Divitiae wasn't interested in a conventional office. The CEO spoke animatedly about creating an environment that would spark creativity, encourage collaboration, and inject a sense of playfulness into the daily grind. He drew inspiration from tech giants like Google, aspiring to cultivate a similar energy in their own space.

As our discussion unfolded, the CEO emphasized the importance of balance - open areas for synergy, private nooks for concentration. He envisioned a flexible layout that would cater to various working styles, moving beyond the traditional desk setup. The concept of transparency was paramount, with the CEO even insisting on a glass-walled office for himself to foster an open culture.

We delved into the nitty-gritty of the design, discussing innovative solutions for acoustics in an open plan and brainstorming ideas for a statement boardroom. Throughout our conversation, one thing remained constant: the space needed to embody Pax Divitiae's innovative spirit and inspire their team to greatness.

The CEO's parting words left me charged with excitement and purpose. He wanted a workspace that would make their team eager to come to work each day. It was a tall order, but one that ignited my creative passion.

As I watched him leave, my mind was already buzzing with ideas. The challenge was set: to create a space as functional as it was inspiring, as playful as it was professional. And so began the journey to bring Pax Divitiae's unconventional workspace to life.

THE RECEPTION

a first impression



The reception area of Pax Divitiae's new office was designed to make a bold statement, immediately conveying the company's innovative and future-forward ethos.

To address the challenge of high ceilings with exposed soffits and services, we introduced an up-and-over timber bulkhead. This element visually lowered the ceiling, grounded the space, and naturally guided visitors towards the reception area.

The finishes were chosen to reinforce a cutting-edge image. High-gloss, off-white surfaces were used for the reception desk and built-in wall cupboards, creating a sleek look. Push-to-open mechanisms replaced conventional handles, maintaining clean lines and emphasizing the minimalist aesthetic.

To balance the masculine design and inject energy, we incorporated pops of yellow - a key color in the company's corporate identity. This vibrant hue appeared in feature pendant lighting and on the back of the computer screen. Fresh yellow flowers added warmth and a welcoming touch to the clean-lined reception desk.

The result was a reception area that perfectly encapsulated Pax Divitiae's identity - innovative, forward-thinking, and attention-grabbing, while remaining inviting and functional. It set the tone for the rest of the office, promising an exciting and unconventional experience from the moment of arrival.

THE THINK POD

a team-centered focus area



The bespoke 'think-pod' was a key feature in Pax Divitiae's innovative office design, serving as a focused collaboration space for both clients and colleagues. Custom-built with vibrant orange and blue colors, it was designed to enhance creativity and energetic focus.

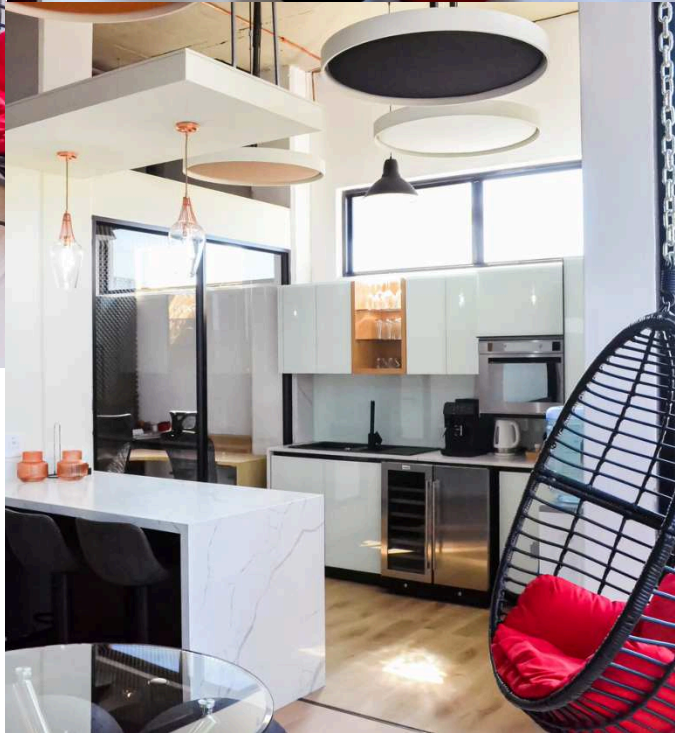
Acoustics were paramount due to the open-plan office layout and the pod's location near the reception area. Bespoke acoustic ceiling panels, doubling as LED lighting with a mix of vibrant and neutral tones, were installed above the pod to absorb sound and provide balanced illumination.

The pod was left open to the ceiling, eliminating the need for additional services and reducing costs. Inside, a built-in sofa upholstered in fabric and walls lined with acoustic foam and fabric further enhanced sound dampening.

This innovative space successfully balanced visual appeal, acoustic performance, and functionality. It not only provided a practical solution for private meetings but also embodied Pax Divitiae's creative approach to work and problem-solving, becoming a standout element in the office design.

OPEN-PLAN KITCHEN

Collaboration Area



The open-plan kitchen and collaboration area was designed as a versatile, energetic space for both clients and staff. It blended the sleek aesthetic of the reception area with playful elements like modular mushroom stools and a hanging lounge chair.

A key feature was the built-in bar-height desk overlooking the highway through floor-to-ceiling windows, serving for both collaboration and focused work. The kitchen counter enhanced the casual, collaborative atmosphere for teamwork and brainstorming.

Acoustic LED ceiling panels were continued in this space to manage sound levels, complemented by feature pendant lights. The lighting design accounted for both abundant natural light during the day and the need for adequate illumination during evening work sessions, with layered solutions including the LED panels, suspended pendants, and integrated lighting in the kitchen bulkhead.

This multi-functional space successfully encouraged casual interaction and collaborative work while maintaining the office's innovative aesthetic. It became a central hub for creativity and teamwork, reflecting Pax Divitiae's commitment to a vibrant, collaborative work culture.

FOCUS PODS

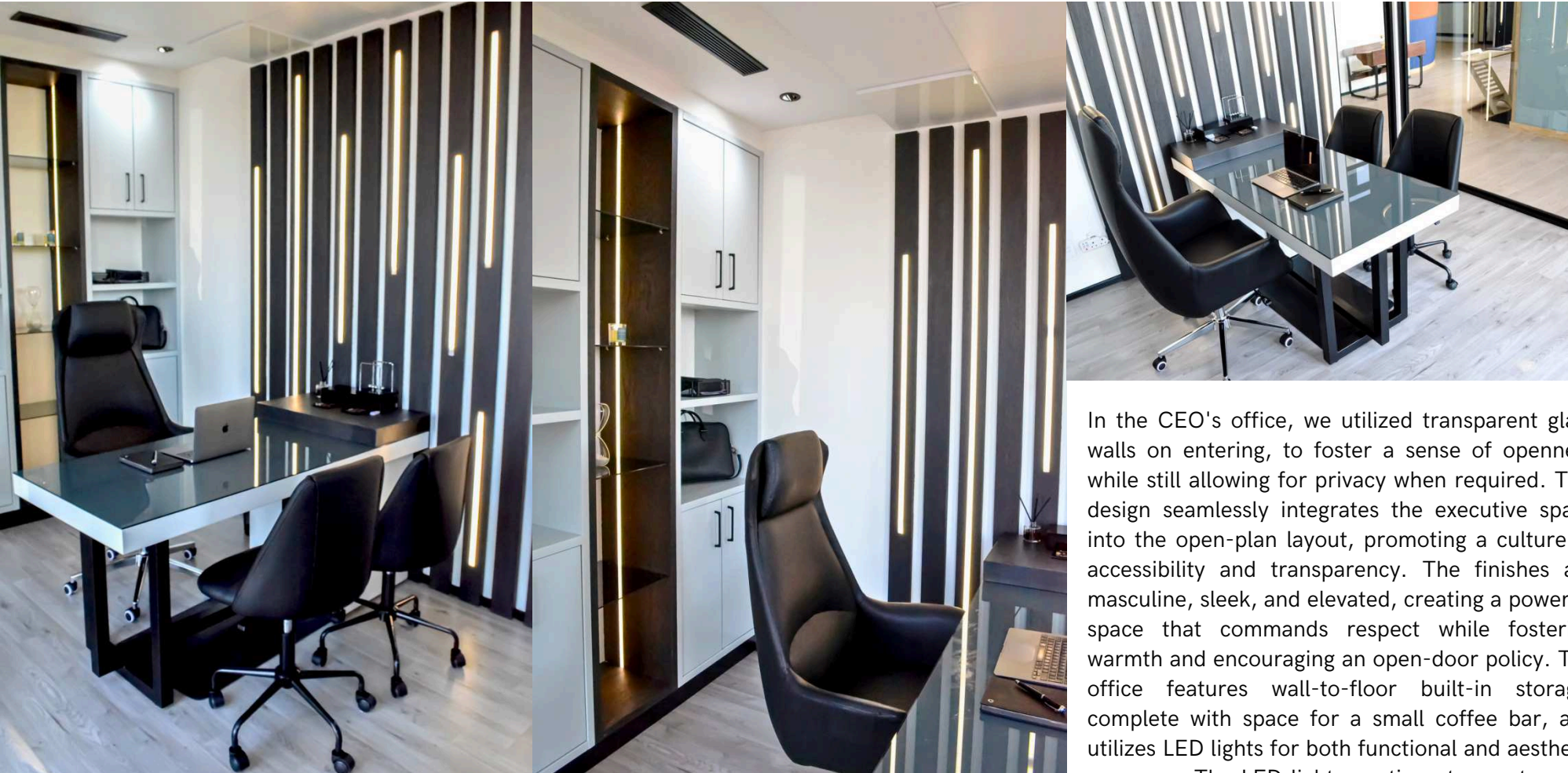
for individual focus work



In addition to the collaborative spaces, Pax Divitiae's open-plan office featured bespoke acoustic pods designed for individual focus work. These innovative structures, strategically placed within the open space, offered a unique solution for privacy without full enclosure. Upholstered with acoustic foam and cleverly positioned, the pods created a noticeably muffled sound environment once seated, despite the absence of doors. Between the pods, modular custom screens were placed that could be used to book the pods and also displayed information about Pax Divitiae's products and services for clients. This thoughtful design provided employees with quiet spaces for concentration while maintaining the open and connected feel of the office.

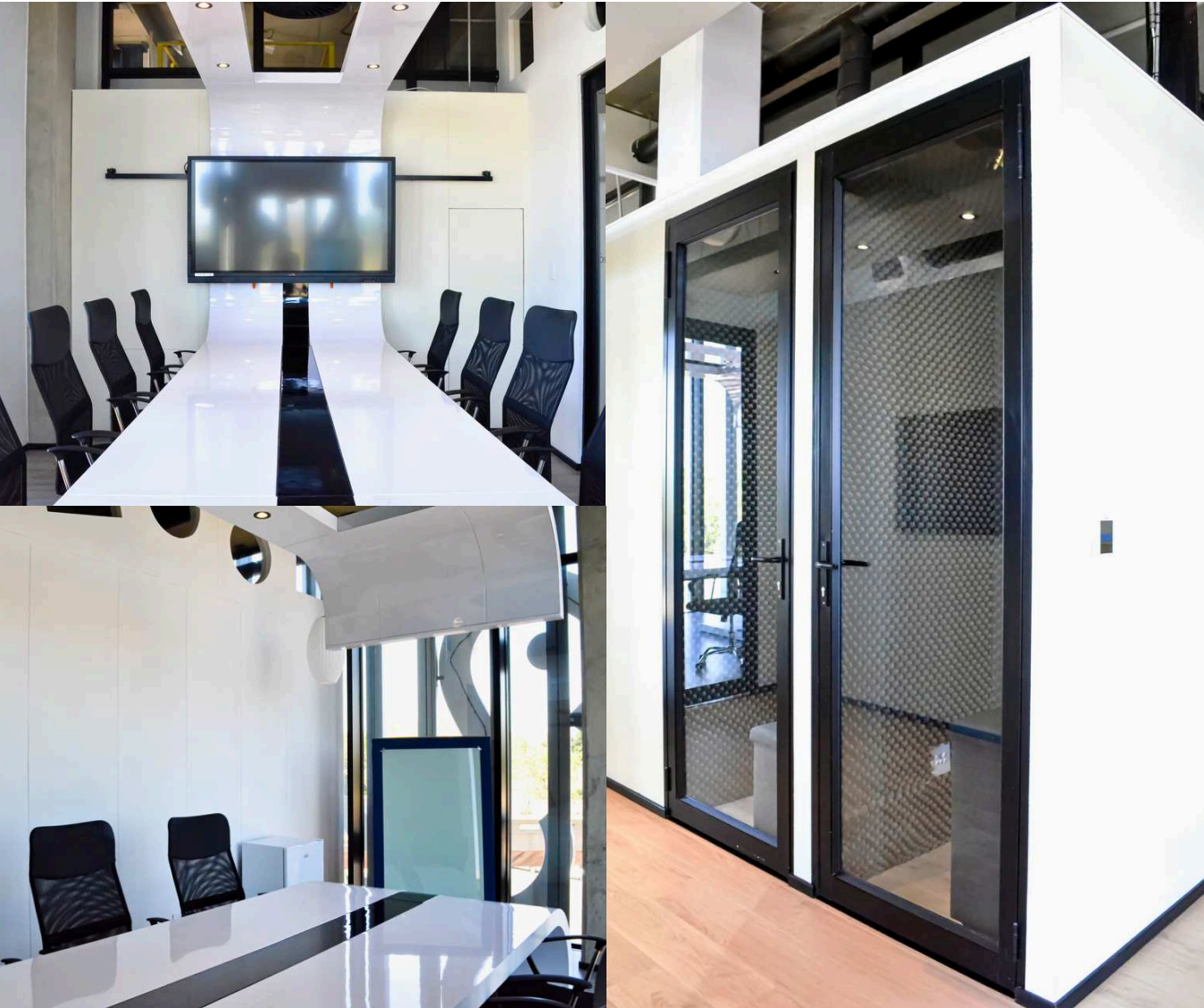
THE CEO OFFICE

a sleek and transparent space



In the CEO's office, we utilized transparent glass walls on entering, to foster a sense of openness while still allowing for privacy when required. This design seamlessly integrates the executive space into the open-plan layout, promoting a culture of accessibility and transparency. The finishes are masculine, sleek, and elevated, creating a powerful space that commands respect while fostering warmth and encouraging an open-door policy. The office features wall-to-floor built-in storage, complete with space for a small coffee bar, and utilizes LED lights for both functional and aesthetic purposes. The LED lights continue to create a 3D feature wall effect that doubles as task lighting, providing the illumination typically offered by a desk lamp. Together the design elements are conducive of a dynamically efficient use of space, while also embracing aesthetics to set a slightly more serious tone for the space.

THE MAIN BOARDROOM *and phone booths*



As you move from the CEO office into the corridor leading to the main boardroom, the colors transition to a minimalist and clean palette of black and white. This high contrast underscores the shift from the playful and creative atmosphere of the open-plan office to a more focused and serious tone. The high-gloss finish enhances light reflection, elevating the space into a future-inspired aesthetic that aligns with the company's forward-thinking corporate ethos.

The corridor features custom-built phone booths, making efficient use of otherwise dead space. These booths provide areas for focused work or private phone calls, where privacy is paramount. The final phone booth serves as a prayer room, reflecting the CEO's deep spirituality and commitment to holistic growth—mentally, physically, and spiritually.

Stepping into the boardroom, the innovative design of the up-and-over boardroom table, which integrates seamlessly with the bulkhead above, exemplifies the company's commitment to innovation and forward-thinking philosophy. This design feature encapsulates their vision and mission, effectively carrying their corporate identity from the vibrant reception area through to the boardroom, where pivotal decisions are made.



**SANBS
MOUNT EDGECOMBE**
Office HQ Design

www.eiwood.co.za

THE PROJECT

Brief

SANBS embarked on an intricate project to design the SANBS headquarters in Mount Edgecombe, Durban. The goal was to seamlessly integrate corporate, medical, and scientific functions, capturing the vital journey of blood from donation to processing. We envisioned an immersive, future-forward environment featuring diverse spaces such as a restaurant, donor center, offices, meeting rooms, and an auditorium, blending their corporate branding with an industrial clinical aesthetic. Sustainability was a priority, requiring green-star certified materials and systems. The design needed to ensure functionality and aesthetic appeal, with innovative branding and warm timber elements to balance the industrial look. Over the course of two years, meticulous collaboration was essential to refine the design, addressing ergonomics, acoustics, and sustainability. Ultimately, we aimed to create a space that inspires and educates, serving its practical purpose while reflecting our commitment to innovation and environmental responsibility. This project, highlighted in *Architect and Builder Magazine* (June/July 2021, Volume 72, Issue 3), exemplified the power of thoughtful, integrated design and is testament to what can be achieved through professional collaboration with architects, engineers and a wide variety of industry professionals.

HOME OFFICE and Stair Landing



Upon entering through the impressive facade and main entrance, visitors are greeted by a spacious reception area. The use of timber introduces warmth to the otherwise stark industrial backdrop of the mezzanine, achieving a perfect balance between the human aspect and the building's functional and operational requirements. The layout has been meticulously designed to ensure that both the functionality of the space and the forms of the design elements evolve harmoniously with its use. This results in a seamless flow of aesthetics that complements the building's operations.

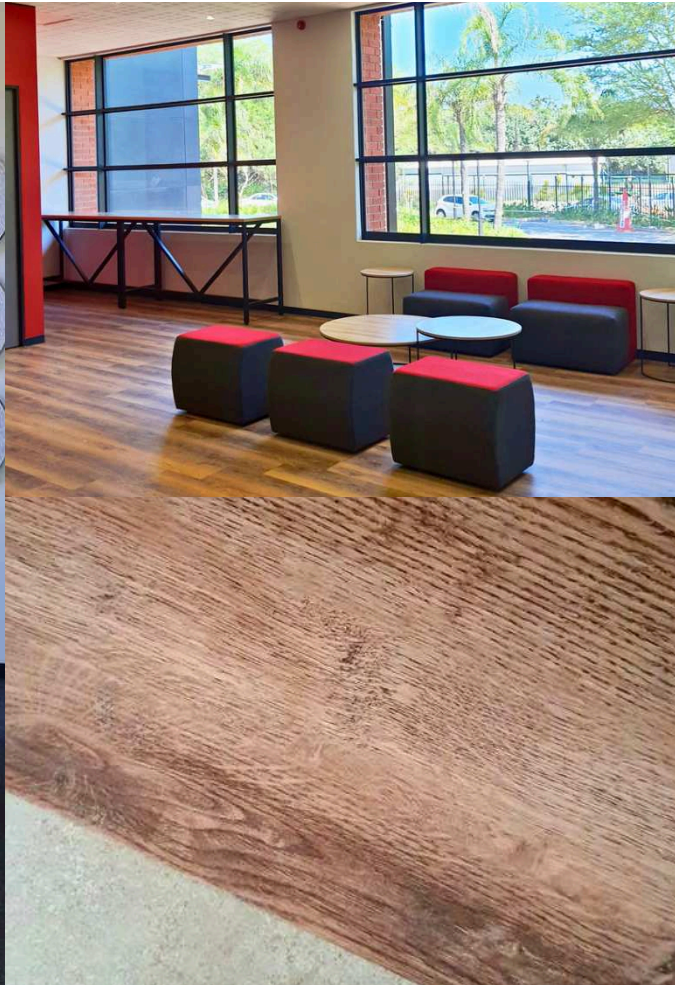
THE LION'S DEN *a Restaurant*



The flow from the reception area seamlessly transitions into the restaurant, aptly named "The Lion's Den" by the client. The design incorporates warm greys, authentic materials such as concrete and timber, and metallic accents to create an inviting yet corporate-oriented space. The layout is thoughtfully designed to foster engagement, with grouped conversation areas that promote a relaxed atmosphere. Strategic spatial segmentation, varied ceiling levels, and the inclusion of soft furnishings ensure acoustic comfort. The overall design provides a space conducive for both visitors and employees to break away and refresh.

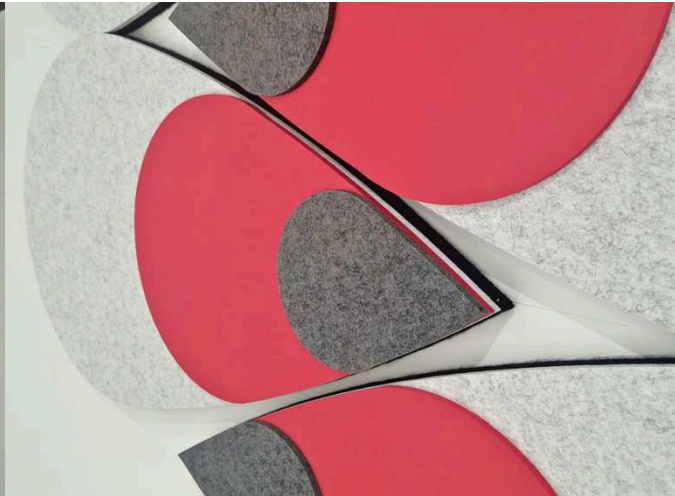
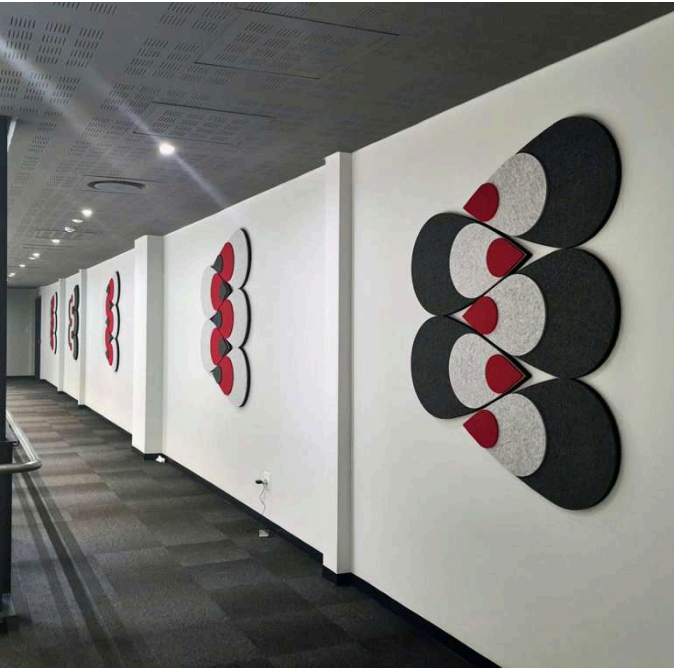
THE DONOR CENTRE

a journey of blood



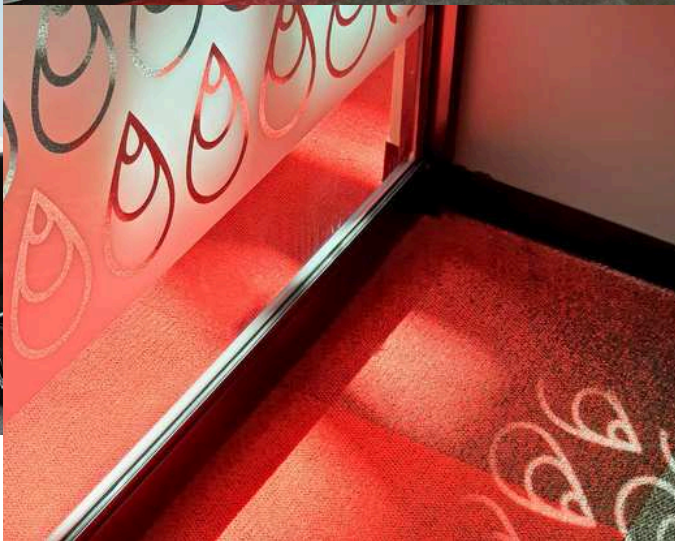
The donor center is a critical component of the facility, serving as the initial point of contact for individuals contributing to the life-saving mission. This space includes offices, interview rooms, a small kitchen, nurse stations, and a donation area. Its design aligns cohesively with the overall aesthetic of the building, with a particularly notable feature being the expansive internal glass facade that provides a view into the laboratory operations. We encourage you to visit and donate, both to fulfill your civic duty and to gain insight into the journey of blood.

THE AUDITORIUM *and Mezzanine*



The SANBS facility includes a state-of-the-art auditorium designed for internal functions and educational purposes, accommodating over 120 visitors. The finishes and elements were carefully selected to meet acoustic and ergonomic requirements, ensuring that attention remains on the function and presentation. Exiting the auditorium, visitors enter a mezzanine walkway that overlooks the lab below through large interior glazed windows, providing an educational view of the daily operations. Acoustic treatment was crucial in this area to control noise levels and prevent disruption to staff. To achieve a functional, calming, and educational environment while adhering to the design aesthetic and corporate identity, acoustic ceilings, carpet tiles, and custom-designed acoustic panels were incorporated.

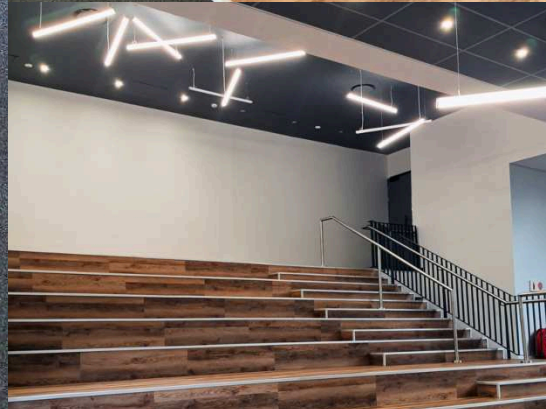
BOARDROOM *and meeting rooms*



The facility features a substantial number of meeting spaces, including three video conferencing rooms, a large boardroom, and several collaborative meeting lounges. All furniture were custom-designed to align with the corporate identity and aesthetic of the building, while also utilizing environmentally friendly materials. Each meeting room has been meticulously designed with careful consideration of acoustics, thermal comfort, and overall atmosphere, ensuring optimal conditions for concentration and productivity.

OFFICES

Closed and Open-plan



The office areas incorporate elements of creativity to foster a positive and energetic atmosphere, designed to inspire staff and enhance productivity through the strategic use of color, branding, and finishes. The layout was developed through extensive analysis of functional requirements, ensuring that the design supports an inclusive corporate culture that values collaboration and employee engagement. The spatial arrangement emphasizes a balance between open collaboration areas, open-plan offices, enclosed and open meeting spaces, and modular seating areas to accommodate diverse work needs.



To view more projects
visit us at www.eiwood.co.za

 irene@eiwood.co.za

 [@interior.designbyeiwood](https://www.instagram.com/interior.designbyeiwood)

 [@DesignByEiWood](https://www.facebook.com/DesignByEiWood)

 081 041 4182